

28TH ANNUAL MINNEAPOLIS

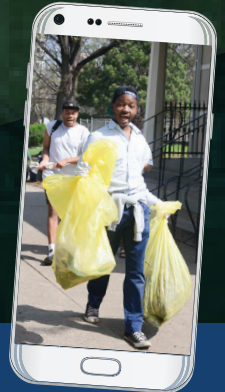
EARTH DAY CLEAN-UP

SATURDAY, APRIL 23
9:30 AM – NOON



BOOM ISLAND 724 Sibley St. NE
Bee 5K: 9 am // Clean up: 9:30 am
Registration required, fees apply.
Visit greatrivercoalition.com

Share pictures of
your trash haul on
our Facebook page
@MPLSEarthDay
using the hashtag
#mplsdIYEaRtHDay



**NO PRE-REGISTRATION REQUIRED
ALL AGES WELCOME // BAGS AND GLOVES PROVIDED**



**CHOOSE AN
EARTH DAY
CLEAN UP
SITE**

Armatage Park
2500 W 57th St.

Bde Maka Ska East
Corner of W Lake St. and
E Bde Maka Ska Parkway

Bassett's Creek
SE Corner of Penn Ave. N
and 1 1/2 Ave. N

Beltrami Park
1111 Summer St. NE

Boom Island
724 Sibley St. NE

Bryant Square Park
3101 Bryant Ave. S

Cedar Lake
Cedar Lake Parkway
and 25th St. W

Creekview Park
5001 Humboldt Ave. N

East River Flats
351 East River Parkway

East River Parkway
E River Parkway and Franklin Ave.

Elliot Park
1000 E 14th St.

Father Hennepin Bluffs Park
100 6th Ave. SE

Folwell Park
1615 N Dowling Ave.

James I. Rice Park
N. 4th Ave. and W. River Parkway

Kenny Park/Grass Lake
1328 58th St. W

Lake Harriet
4135 Lake Harriet Parkway
(Bandshell parking lot)

Lake of the Isles - East
W 27th St. and
E Lake of the Isles Parkway

Longfellow Park
3435 36th Ave. S

Loring Park
1382 Willow St.

Lynnhurst Park
1345 W Minnehaha Parkway

Mill Ruins
102 West Portland Ave. S

Minnehaha Falls
4801 South Minnehaha Drive

Mueller Park
2509 Colfax Ave. S

Nokomis
2401 Minnehaha Parkway E

Pearl Park
414 Diamond Lake Rd. E

Powderhorn Park
3400 15th Ave. S

Sibley Park
1900 E 40th St. E

Sumner Field
901 Aldrich Ave. N

Theodore Wirth
The Trailhead 1221
1221 Theodore Wirth Parkway

Thomas Lowry Park
900 Douglas Ave. S

Triangle Park
10th Street between 4th and 5th
Ave. S

Waite Park
1810 34th Ave. NE

West River Parkway (2 locations)
W River Pkwy and 36th St.
W River Pkwy and 44th St.

Whittier Park
425 W 26th St.

Visit minneapolisearthday.com for more information



**Minneapolis
Park & Recreation Board**
MPRB IS 100% TOBACCO FREE